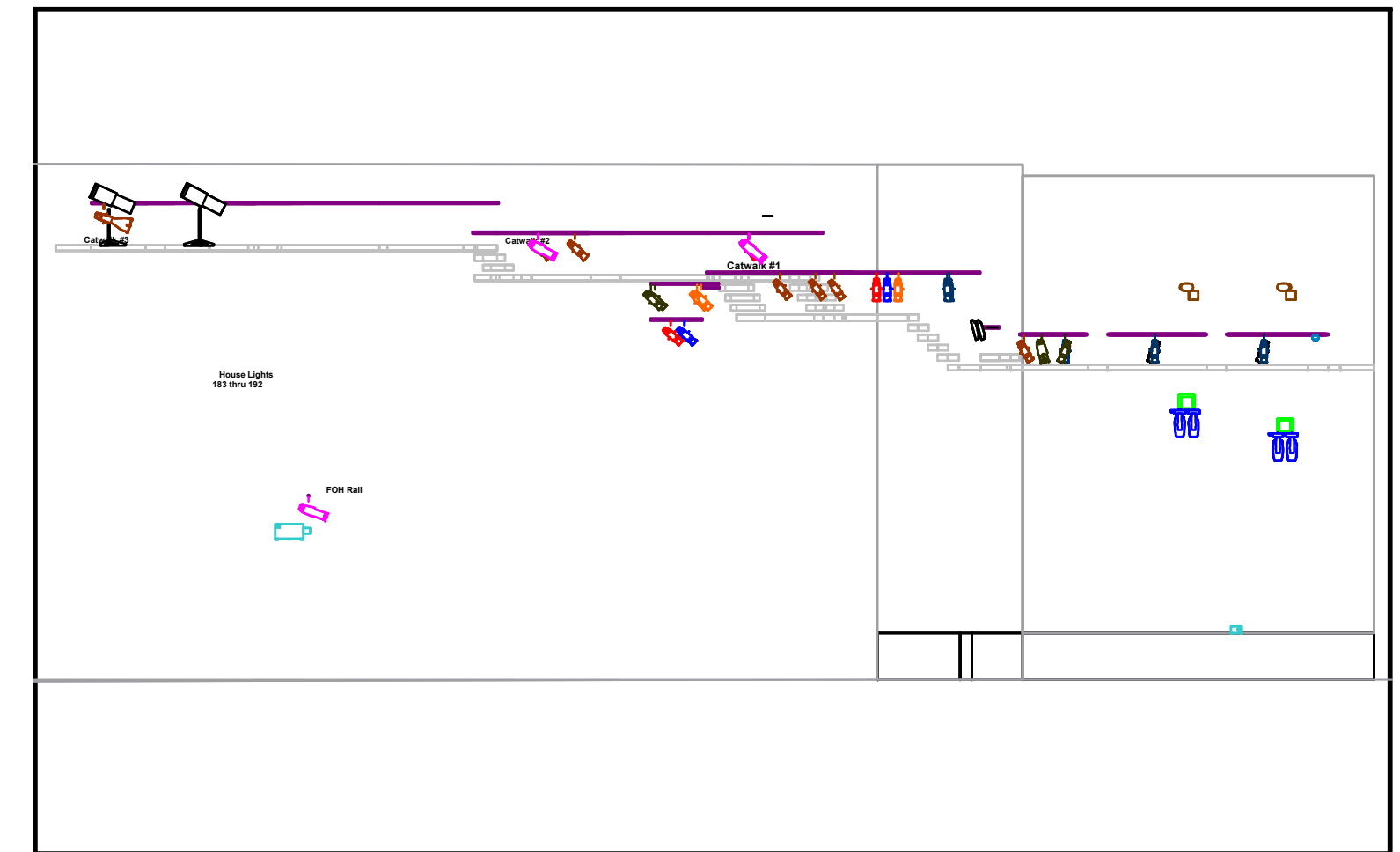
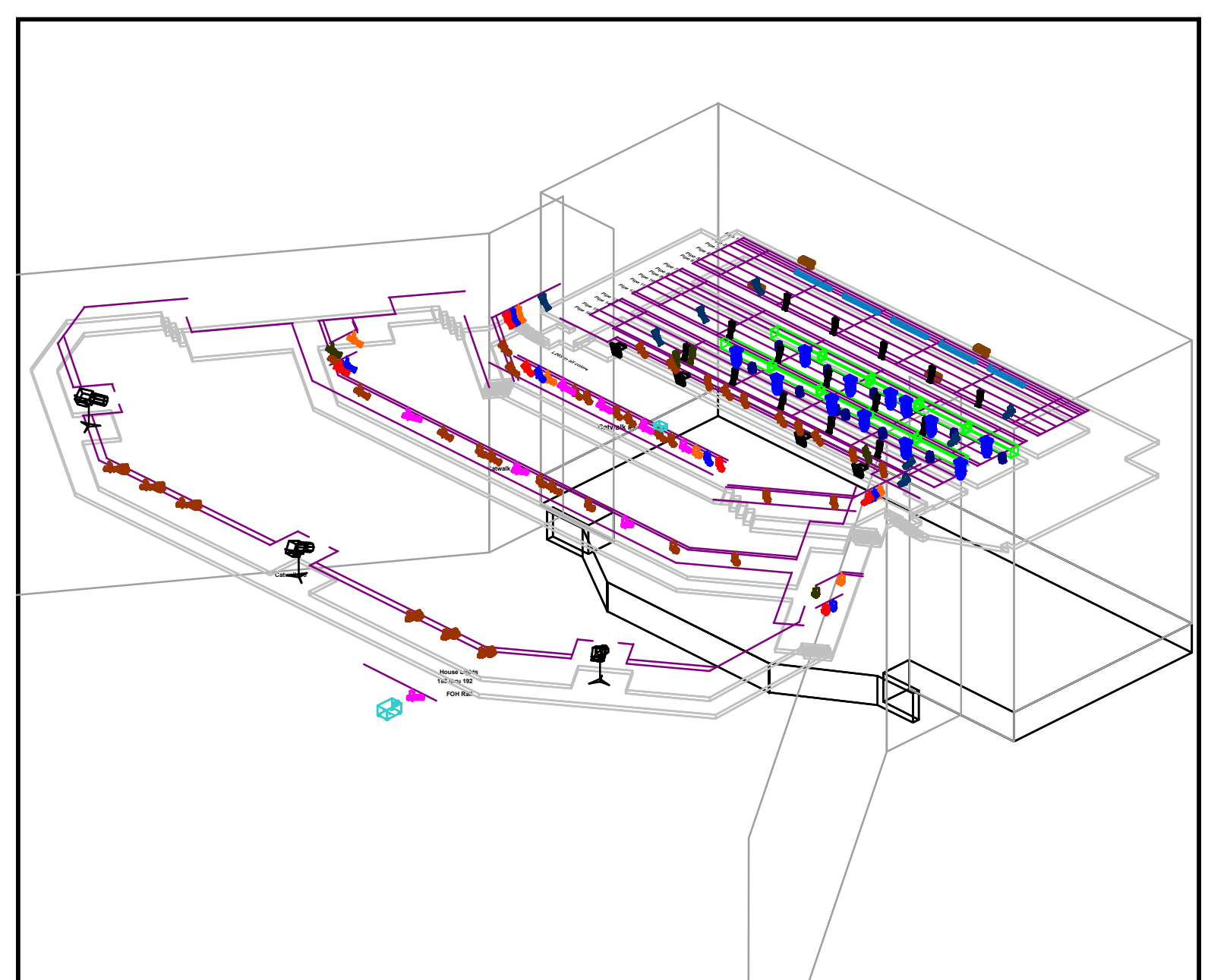
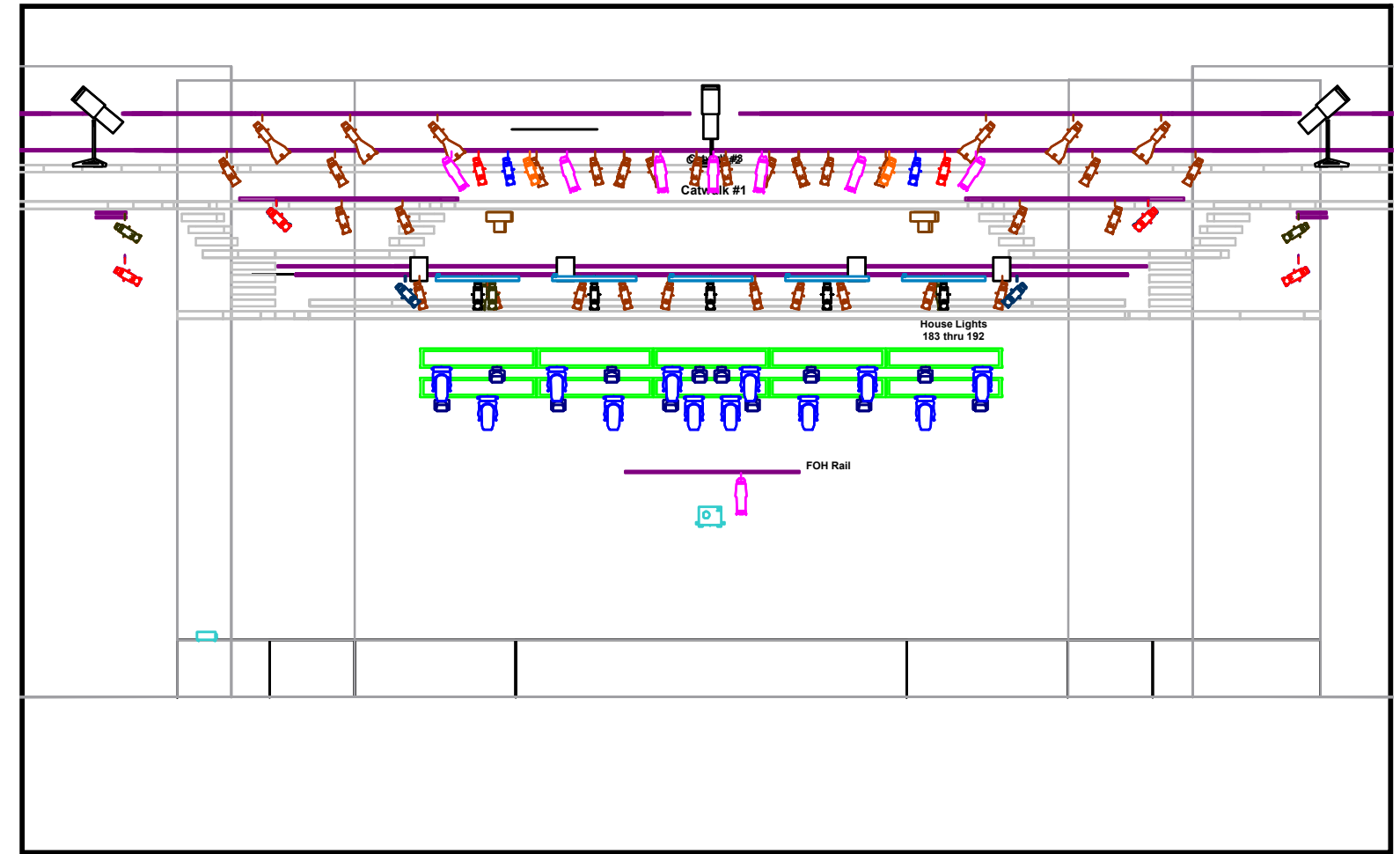
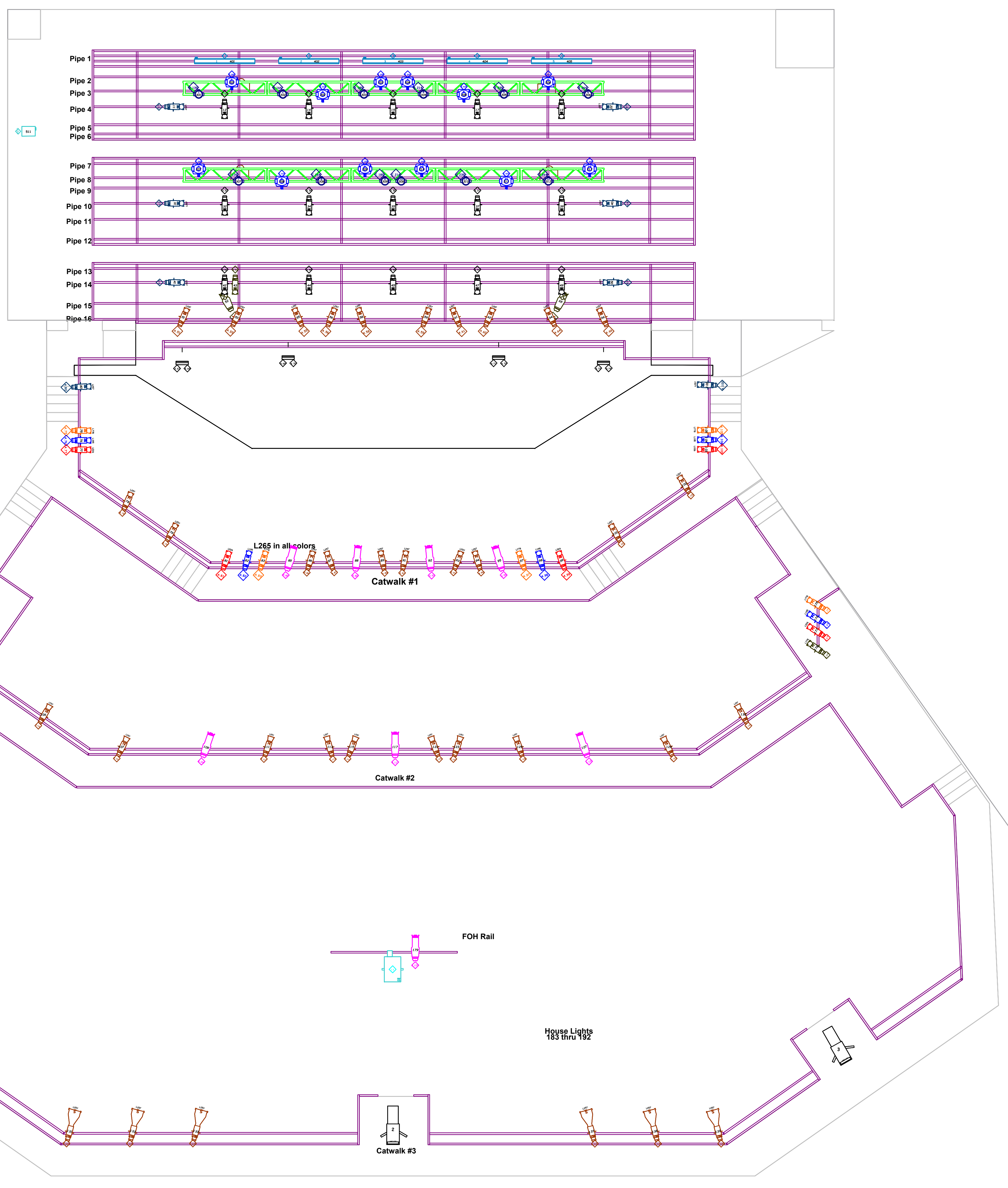


Legend	Name	Lens	Lamp	Count
	Source 4 750	5 Degree	HPL 750W/115V	6
	Source 4 750	14 Degree	HPL 750W/115V	10
	Source 4 750	19 Degree	HPL 750W/115V	18
	Source 4 750	26 Degree	HPL 750W/115V	24
	Source 4 750	36 Degree	HPL 750W/115V	22
	Source 4 - 2550 Zoom		HPL 750W/115V	2
	Source 4 - 1530 Zoom: Unfocused		HPL 750W/115V	8
	MR16 Blender 2-CCT	EYJ - MR16/NFL		4
	Era 600 Profile		LED 6500K	12
	MAC Aura		LED	12
	Color Force 72	Cyc	LED	5
	Lycian M2 1.2k (Extra Cost)	Medium	HMI1200	3
	Radiance Hazer (Extra Cost)			1
	HDX-W12 Projector (Extra Cost)	1.5-2.0:1	2.5kW Xenon	1

Conventionals	MAC Aura	Era 600 Profile
Color Force 72		

NOTES:

- GrandMA3 Lite is the house console
- Touring consoles can connect via Netvork sACN or via SPN DMX: House is 4 units
- Only ACT Staff may access lighting grid / positions
- All hung fixtures must have "trigger" style clamps, not C-clamps
- All hung fixtures must have safety chains
- Opto splitters will be supplied where necessary (2 Max)
- Termination on all DMX is required
- Rigging safety gear to be supplied by A.C.T.
- 2 x 200A 3phase / 5 w ire electrical service available on USL for touring lighting
- House plot gel included in room rental
- Alternative gel available at extra cost or provided by client. Gel must be pre cut & labelled if provided by client
- 3 x Follow spots available (Extra cost)
- Radiance Hazer Touring System available (Extra cost)
- Barco HDX12 Front Projector available (Extra cost)



Algonquin Commons Theatre

Producer: Algonquin Students' Association	
Lighting Designer: mikey Blanchard	
Manager, Production Services: Jess Preece	
Contact: preecej@algonquincollege.com	
Head of Production Services: Leeza Wyatt	
Contact: wyattl@algonquincollege.com	
Revision Date: April 2026	